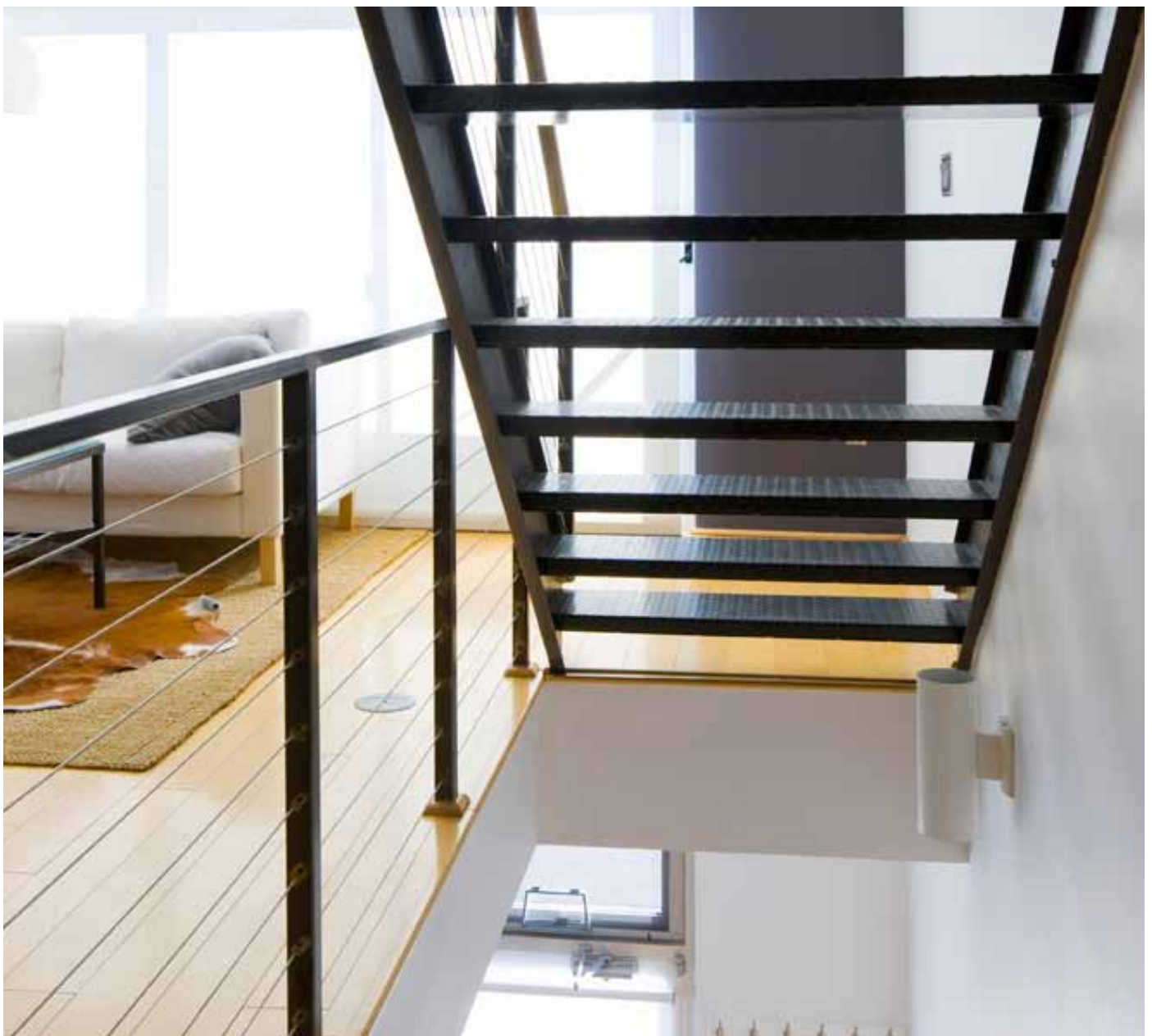


silver lofts phase 1 albuquerque nm

The live/work Silver Lofts Phase I project is the catalyst and model for two additional phases of mixed-use housing that will reconstitute two and one-third city blocks in downtown Albuquerque. The urban design strategy of this innovative infill project is to remake the street and the block, and re-introduce shared courtyards, an urban typology traditionally employed in this historic transitional neighborhood.

The 18 units in Silver Lofts Phase I range in size from 1050 to 1080 and 1600 square feet, and are config-

ured around an auto mews with garages accessed off the alley. Ground level owner-occupied work and retail spaces front onto Silver Avenue and 8th Street to create an active pedestrian streetscape across from the Flying Star Café. A 17-foot high main space contains an efficient line kitchen and living areas with a loft space. Cantilevered metal balconies off of the main level modulate and lend scale to the building's elevations. Open tread metal stairs lead to an upper master bedroom level with an outdoor patio deck providing dramatic views of the city, mountains and mesa.



Silver Lofts phase I

Location: Downtown Albuquerque NM

Project area: .32 acre

Density: 54 dwelling units per acre

Size: 22,300 heated sf, 18 lofts

Est value: \$4.4 million

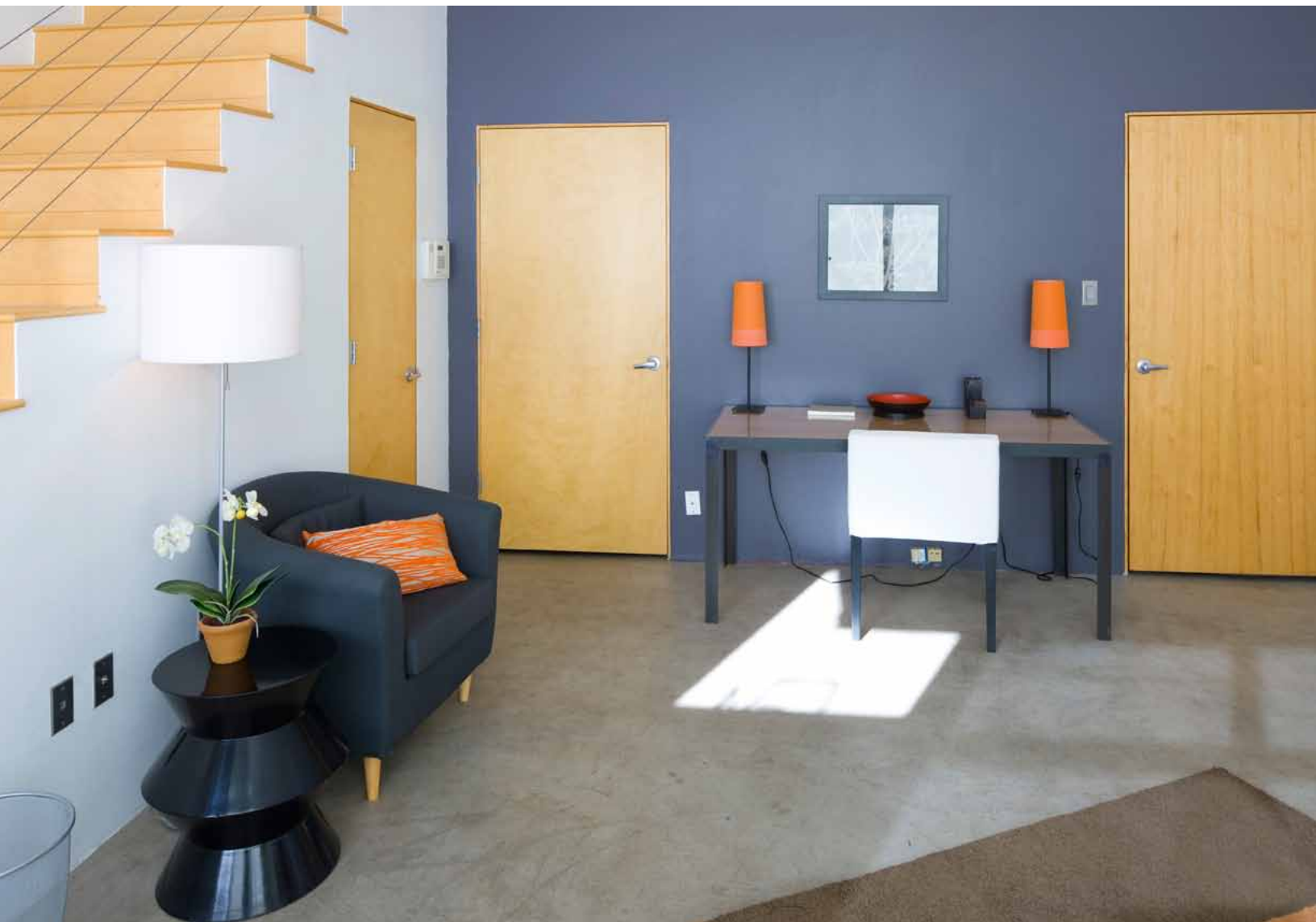
Completion date: 2005

Project team:

- Developer: Infill Solutions Urban Design + Development
- Design Team: Infill Solutions and Calott + Gifford
- Civil and Structural Engineer: ABQ Engineering
- Contractor: Enterprise Builders

Awards:

- 2005 American Institute of Architects Merit Award
- 2005 NAIOP Awards of Excellence Residential Category
- 2005 American Institute of Architects Santa Fe Design Excellence Award
- 2005 American Institute of Architects Home Tour



silver lofts phase I
albuquerque nm



silver lofts phase I
albuquerque nm



silver lofts phase I
albuquerque nm



rembe urban design + development
117-b richmond drive se
albuquerque nm 87106

www.rembedesign.com
505.453.7164

